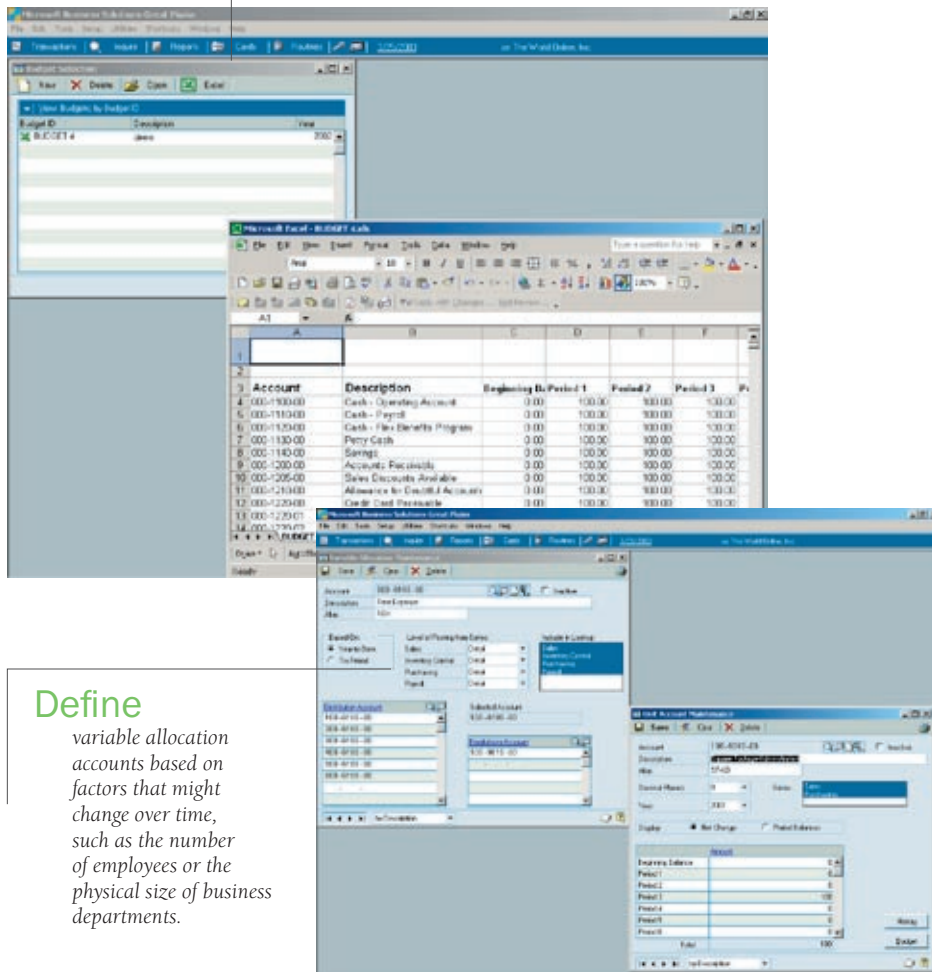


GENERAL LEDGER

Manage the financial heart of your business with intelligent accounting and analysis capabilities that make your finances work for you, giving you the vital information you need and changing the way you do business for the better.

Create budgets

using Microsoft Excel and easily import the budget details using a wizard interface.



Define

variable allocation accounts based on factors that might change over time, such as the number of employees or the physical size of business departments.

BENEFITS

Master your financial data

Take control of your financial information through advanced financial analysis capabilities that show you not only where you stand right now, but where you'll be in the future.

Improve your decision-making

Get the answers you need to make better business decisions with comprehensive reports and easy-to-use inquiry tools that facilitate rapid, accurate analysis of your business operations.

Streamline your accounting

Manage your accounting more efficiently with flexible accounting tools and automated transaction processing that saves time and simplifies the way you handle your money, whether coming in or going out.

Customize to your needs

Track and analyze your financials in the way that best suits your business—not someone else's—with tools and accounting structures that you design yourself to serve your needs.

Improve your efficiency

Empower your employees with a straightforward, consistent focus for managing accounting data that lowers administrative costs and gives you tight control over the financial heart of your business.

Seamless integration

Expand your business potential by using General Ledger to tap into information in other Microsoft® Business Solutions—Great Plains® applications and include it in accounting or analysis tasks.

Focus: Comprehensive Accounting Tools

The Tools You Need to Master Your Financial Data

From flexible account options to intelligent transaction processing, the comprehensive accounting tools in General Ledger will allow you to capture and analyze vital financial information so you know where you've been and can chart where you're going.

Among the flexible accounting and financial tracking capabilities, you'll find:

- User-defined account structures
- Personalized shortcut navigation
- Unlimited budget tracking for each account
- Non-financial information capture that's linked to accounts but not recorded in your general ledger
- Easy-to-define fiscal periods
- Cross-module transaction auditing
- General, recurring, and auto-reversing entries for simplified transaction management
- Efficient multicurrency handling, with full control over transactions in either the originating or functional (home) currencies

View

account balance information in summary and drill down to analyze transaction details.

The screenshot displays the 'Detail Inquiry' window for the 'Accounts Payable' account. It shows a summary table of account balances and a detailed table of transactions.

Period	Left	Right	Net Change	Period Balance
Beginning Balance	\$0.00	\$3.00	\$0.00	\$0.00
Period 1	\$0.00	\$5,177.95	(\$5,177.95)	(\$5,177.95)
Period 2	\$3,210.85	\$16,174.57	(\$12,963.72)	(\$17,302.91)
Period 3	\$17,542.72	\$4,299.20	\$21,841.92	(\$4,305.53)
Period 4	\$5,475.34	\$1,171.09	\$4,304.25	(\$10.28)
Period 5	\$0.00	\$3.00	\$0.00	\$0.00
Period 6	\$0.00	\$3.00	\$0.00	\$0.00
Period 7	\$0.00	\$3.00	\$0.00	\$0.00
Period 8	\$0.00	\$142.32	\$0.00	\$0.00
Period 9	\$0.00	\$3.00	\$0.00	\$0.00
Period 10	\$0.00	\$3.00	\$0.00	\$0.00
Period 11	\$0.00	\$3.00	\$0.00	\$0.00
Period 12	\$0.00	\$3.00	\$0.00	\$0.00
Total	\$196,729.91	\$708,314.44		

Date	Account Code	Source Document	Reference	Debit	Credit
1/2/2001	808		\$1,854.00	\$0.00	\$0.00
1/3/2001	800		\$3.00		\$94.25
1/3/2001	812		\$3.00		\$71.36
1/4/2001	802		\$12,305.30		\$0.00
1/5/2001	803		\$1,250.20		\$0.00
1/9/2001	890		\$4,435.10		\$0.00
1/9/2001	890		\$3.00		\$94.25
1/18/2001	834		\$3.00		\$28.84
Total			\$27,842.70		\$4,208.25

Expand your Financial Capabilities with Multidimensional Analysis

As an optional module for General Ledger, Multidimensional Analysis gives you the power to analyze your financial information any way you want, without adding complexity to your chart of accounts.

Benefits

Increase the value of your financial information

- Sharpen your competitive edge with flexible tools that categorize and track your highly specific information without adding undue administrative overhead.

Analyze key transactions

- Easily view, sort, and analyze your essential financial, sales, and purchase transactions using groups and codes that you define to fit your needs, in order to best see the information that makes your business successful.

Easily track information

- Get easy access to the information buried in your financial system with detailed and summary inquiry information, comprehensive reporting, and automated transaction tracking.

Multidimensional Analysis Features List

Flexible Project Definition

- Define any type of analysis grouping you need, including department, product lines, regions, or employees, and set up an unlimited number of analysis codes to analyze any facet of your business.

Integrated Analysis Information

- Automatically include transaction information from other Great Plains applications in your analysis, including Receivables or Payables Management, Invoicing, and Purchase Order Processing.

System-wide Analysis

- Perform analysis or drill down to greater detail through inquiry windows including Invoice Distributions Inquiry, Journal Number Inquiry, Payables Distribution, Transaction Entry, and Sales Distribution Inquiry.

Unlimited Analysis Groups

- Create unlimited projects and associate those projects with the appropriate revenue and expense accounts.

Track multiple dimensions in transaction entry

- Track quantities as well as dollar amounts from transactions and use default percentages to automatically record how much of each transaction should be shared among several projects.



GENERAL LEDGER | FEATURES LIST

General Ledger

- Design an accounting structure to suit your business or create unique structures for each company in your organization, with extensive flexibility and structures up to 66 characters long, and up to 10 segments of any length.
- Manage accounts and transactions with unlimited flexibility using user-defined accounting structures, definable fiscal periods, prior-year adjustments, batch posting, cross-module auditing, and more.
- Easily create default budget templates complete with accounts, descriptions, and default amounts in Microsoft Excel, and then export and import budgets to and from Excel through an interactive wizard.
- Improve advanced financial analysis capabilities by modifying existing General Ledger financial reports or creating new reports, with unit-account information, comparative analysis, and complete graphical support.
- Easily create comprehensive reports consolidating information from multiple companies, provisional transactions, or define new reporting relationships with FRx Desktop.
- Find and analyze the exact information you need through General Ledger's seamless integration with other Great Plains applications such as Receivables or Payables Management, Invoicing, Sales Order Processing, and Crystal Reports.

Multidimensional Analysis

- Define any type of grouping you need, including departments, product lines, and regions, and set up unlimited analysis codes to analyze any facet of your business without reformatting your chart of accounts.
- Automatically allocate transaction amounts to different groups or projects for posting to Multidimensional Analysis tables for reporting and complete analysis capabilities.

Account Level Security

- Filter account views based on access granted for accounts, increasing security and eliminating errors caused when entries are made to inappropriate accounts.

Intercompany

- Manage single-use or recurring transactions between companies in your organization, with unlimited flexibility in defining intercompany relationships and streamlined account distributions per journal entry.

Financial Management components are sold separately. Multidimensional Analysis, Account Level Security, and Intercompany are not available with Great Plains Standard.