



GREAT PLAINS
Dynamics

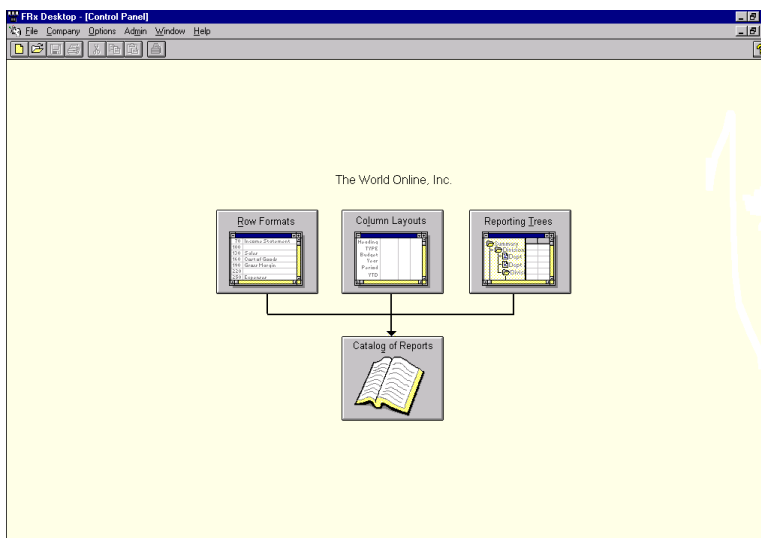


FRx for Dynamics

FRx for Dynamics is the high performance financial reporting tool that provides you with comprehensive, meaningful, and highly customizable financial and management reports that are easy to create and use.

Rapid report design enhances reporting flexibility

"Building block " approach: Design your reports using simple building blocks. The most fundamental building block is the **row format**, which determines the description and source of data for each row in your reports, as well as for any calculations and totals. The second building block is the **column layout**, where you define the columns that will appear in your report, such as general ledger, worksheet, or calculation columns, and the appropriate periods to include. The third building block, the **reporting tree**, establishes the relationship between the various reporting units in your company, but it does so in such a way that sets the reporting structure apart from the chart of accounts. With one building block setup, organizations can print financial statements for each division or department.



Simply design your reports using a "building block" approach with columns, rows, and reporting tree layouts.

Powerful features expand your analysis capabilities

Consolidations: Easily consolidate information from multiple Dynamics companies, and from other data sources, as well.

Provisional reporting: Including unposted transactions in financials is a simple and straightforward process with Dynamics and FRx.

Base period referencing: Easily create reports comparing periods and then set the current base month, quarter or other financial period at the time you run the report.

Calculations: Mathematic and if/then logic allows you to add sophisticated calculations into your reports.

Roll up reporting: Create reporting relationships that need not exist in your chart of accounts, allowing you to change reporting structures without affecting data entry processes.

Rearrange account structures: Rearrange the various account segments with a simple drag and drop technique and create new reporting relationships.

Powerful yet easy to use for report developers and users alike

Spreadsheet interface: FRx for Dynamics works the way a spreadsheet works, with one important difference. Because FRx is tightly integrated with Dynamics, you eliminate the error-prone and time-intensive updating and maintenance process.

Programming degree not required: Anyone from the CEO to the marketing analyst (with appropriate security controls) can develop customized reports that are as focused or expansive as the situation requires.

Tight integration with Dynamics: FRx is tightly integrated into the Dynamics account and database structures, making it easy for FRx to create intelligent financial statements with the information your organization needs.

FRx for Dynamics

A	B	C	D	E	F	G	H
Row Code	Description	Fmt Code	Related Rates/Flows/Unit	Norm Bal	Fmt Out	Column	Link to General Ledger
100	Assets	DES					
130	Cash - Operating Account						(1100 TO 1130)
160	Savings						1140
190	Accounts Receivable - Net						1277
430	Inventory & Prepaid						1377 (1477)
500	Furniture & Fixtures						1500
610	Accumulated Depreciation-Furniture & Fixtures						1505
640	Computer Equipment						1510
670	Accumulated Depreciation-Computer Equipment						1515
700	Machinery & Equipment						1520
730	Accumulated Depreciation-Machinery & Equipment						1525
760	Fleet Vehicles						1530
790	Accumulated Depreciation-Fleet Vehicles						1535
820	Computer Software						1600
850	Amortized Software Costs						1610
880	Leasehold Improvement Costs						1700
910	Amortized Leasehold Improvements						1710
920		DES					
940	Total Assets	TOT	130 TO 910				
950		DES					
960		DES					
970	Liabilities and Equity	DES					
980		DES					
990	Liabilities	DES					
1000	Accounts Payable			C			2100
1030	Purchases Discounts Available			C			2105
1060	Accrued Expenses			C			2110
1090	Unearned Income			C			2115
1120	Other Payables			C			(2120 TO 2610)

FRx uses spreadsheet like features with one difference, it is tightly integrated with your Dynamics system reducing entry time and need for continuous maintenance.

Reporting delivery systems get the right information into the right hands, right now

Drill down from FRx reports into Dynamics: Analyze financial reports on screen, and drill down directly from the financial report into the underlying Dynamics data for instant access to the answers you need. Hundreds of customers have identified this as the single-most valuable feature in their accounting system, and it is available exclusively through Dynamics and FRx.

FRx DrillDown Viewer - [Report]						
DYNCDemo						
For the Month Ending July 31, 2002						
2002						
Income Statement		\$7,571.34				
Sales		7,571.34				
Net Sales		7,571.34				
COGS						
Gross Profit						
Commission Expense						
Total Operating Expense						
Net Income						

FRx DrillDown Viewer - [Report - Sales]						
DYNCDemo						
For the Month Ending July 31, 2002						
2002						
Sales:		7,034.82				
000-4110-01 US Sales - Retail/Parts						
000-4120-00 US Sales - Service Plans						
Total Sales		7,034.82				

Detail Inquiry						
Clear Redisplay						
Account		000-4120-00				
Description		US Sales - Service Plans				
Year:		2002				
Account Balance:		(\$536.52)				
Date:		From: 7/1/02 To: 7/31/02				
Source Document:		All From: To:				
Currency ID:		All From: To:				
Date	Journal Entry	Debit	Reference	Credit	Currency ID	
7/31/02	832		8808.23		\$0.00	
7/31/02	832		\$0.00		\$1,344.75	

FRx enables you to drill back to the originating transactions for the greatest level of detail you may need without leaving the report.

Remote drill downs: Even individuals who are not connected to Dynamics can view the financial information underlying their FRx financial reports. Using the FRx Remote Drill Down Viewer, users can drill down to the supporting account detail behind your FRx financial reports.

View FRx reports three ways to get the information you need: Printer, screen or e-mail - Choose from three report destinations and use FRx reports for different purposes. Printed reports are useful for easy reference and distribution. Reports displayed on screen are easy to search for specific information, and enable you to drill down into the underlying Dynamics data. And e-mailed reports allow for efficient distribution and can include account detail for further financial information support.

Security: FRx allows you to set security by Reporting Tree level to ensure information is access by only those users that have the defined permission granted to them.

Additional Modules in FRx

Report Server is offered as an additional module for purchase. The FRx Report Server allows reports to be launched from a client machine and the reports generated on a high-end server. When generating reports, your workstation is free to move on to other tasks. The FRx Report Server has the option to notify you by email once the report has finished processing. You can distribute these reports to anyone within your organization regardless of their location and they can view the report by using the FRx DrillDown Viewer.

The Currency Translator is offered as an additional module for purchase. The Currency Translator gives FRx the ability to perform translations across multiple accounting systems (based on historical, spot or average rates). Host systems can store the currency translation rates. If no conversion rates are available, FRx will store the rates that will be utilized in the report generation process. FRx currency translation adheres to the requirements of GAAP (FASB52) and the new Euro triangulation accounting provisions.