

Integration Manager



Ease of use, low cost, quick implementation, and accuracy are important considerations when selecting an integration tool for your organization. Microsoft Great Plains leverages these needs with the Integration Manager. Integration Manager is a powerful tool that utilizes the same business logic used in the Microsoft Great Plains Business Solutions products (Dynamics, eEnterprise and Siebel) to safely and easily integrate data *"from anything to anything"* at a low cost.

Use of this business logic eliminates the need for the user to understand the complexity of table structures. The data being integrated is fully validated and all error-checking routines are followed.

Integration Manager utilizes business objects that are based upon the strong foundation of Microsoft's Component Object Model (COM) standard. These business objects consist of intuitive field names the user will immediately recognize, therefore saving users hundreds of hours normally spent researching and reviewing complex database queries, or navigating through massive data models trying to build an integration.

In addition, integrations you define will continue to work with each product release. Each new version of the Integration Manager is tightly integrated with the pre-built business objects, and existing integrations will automatically work with business objects in the updated product version.

The Integration Manager enhances productivity

Consolidated business data. By integrating multiple business applications into Microsoft Great Plains, users can leverage the powerful reporting and querying tools available to provide a comprehensive look into the economic health of a business.

Customized integrations. VBScript can significantly enhance and extend the functionality of your integrations.

Lower cost of implementation. No knowledge of the database being integrated into or from is required to define and perform an integration. The Integration Manager saves users hundreds of hours normally spent researching and reviewing complex database queries, or navigating through massive data models trying to build an integration.

Ensured accuracy of integrated data. All external data you choose to import is processed through business objects, ensuring that only data that meets the Microsoft Great Plains business processing criteria will be committed to the database.

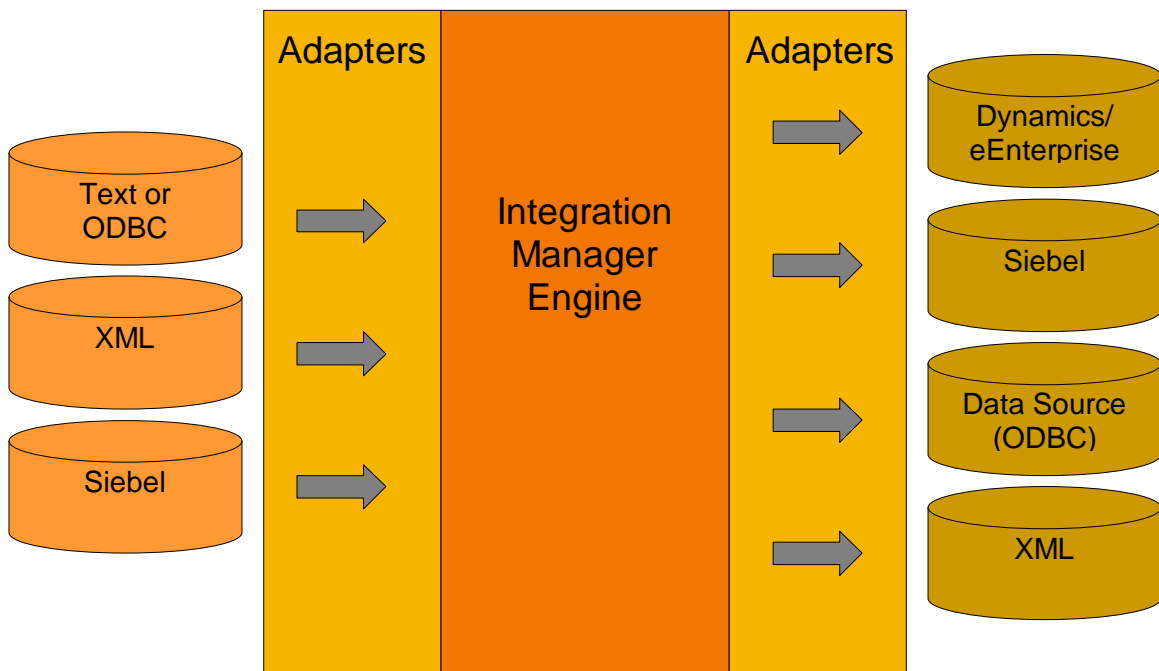
Leveraged industry-standard technologies. All business objects available in the Integration Manager are based upon the strong foundation of Microsoft's Component Object Model (COM) standard.

Ensured growth. Each new version of the Integration Manager is tightly integrated with the pre-built business objects, and existing integrations will automatically work with business objects in the updated version of Microsoft Great Plains Business Solutions.

Flexible Architecture

The Integration Manager is a series of its own. It consists of a series of Adapters that you can mix and match – enabling you to create the integration the best meets your organization's needs.

The Integration Manager architecture essentially consists of three parts – Source Adapters, Destination Adapters, and an Engine. **Source Adapters** contain information about where the data is coming *FROM*, such as a text file, an ODBC data source, Siebel, etc. The information used by the Source Adapters include the details about the data being integrated (fields, values, etc.). **Destination Adapters** contain information about where the data is going *TO*, such as Dynamics/eEnterprise, Siebel, an ODBC data source, etc. The information used by the Destination Adapters include the details about where the data is being integrated into (fields, values, field lengths, etc.). The **Engine** sits in between the Source Adapter and the Destination Adapter and “maps” the data between the two.



Because of this architecture, you can “mix and match” where the data is coming from and where the data is going to. As we move forward with creating additional Source and Destination Adapters, the number of possible integrations

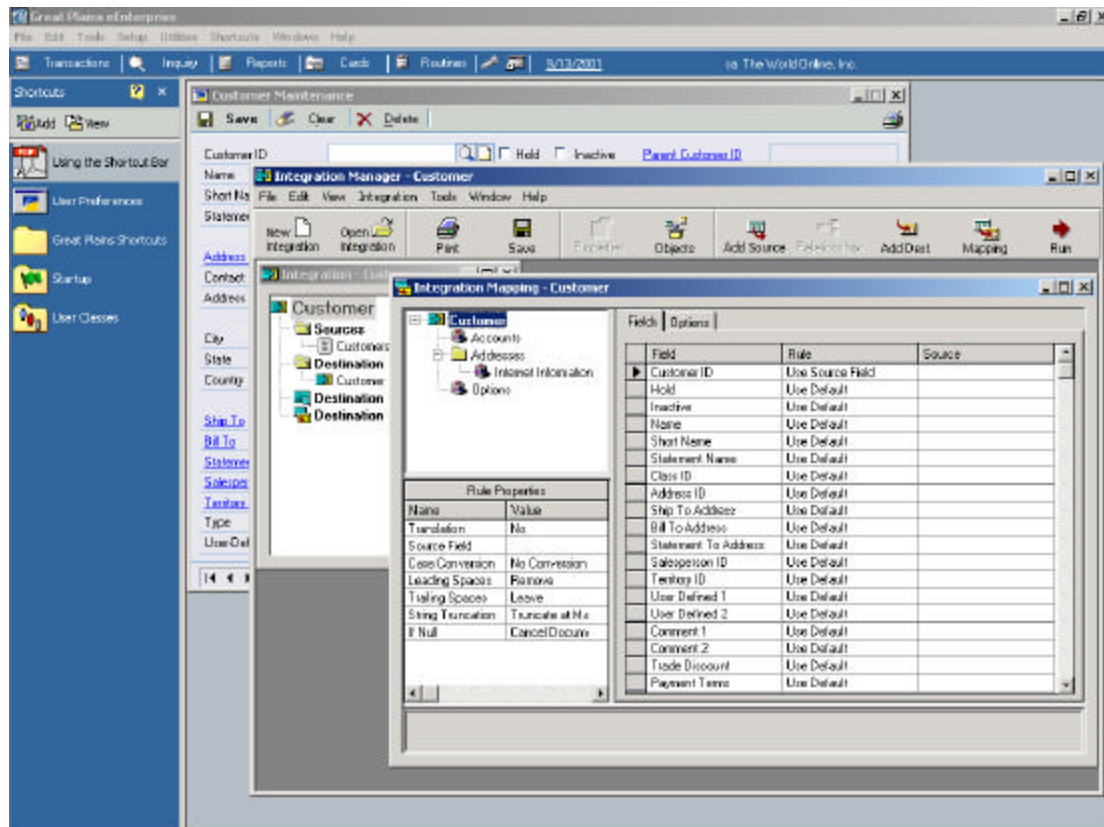
Integration Manager

explodes in size. With the graphic above, there are literally a dozen different combinations of integrations that can be created.

“Mix and Match” Adapters

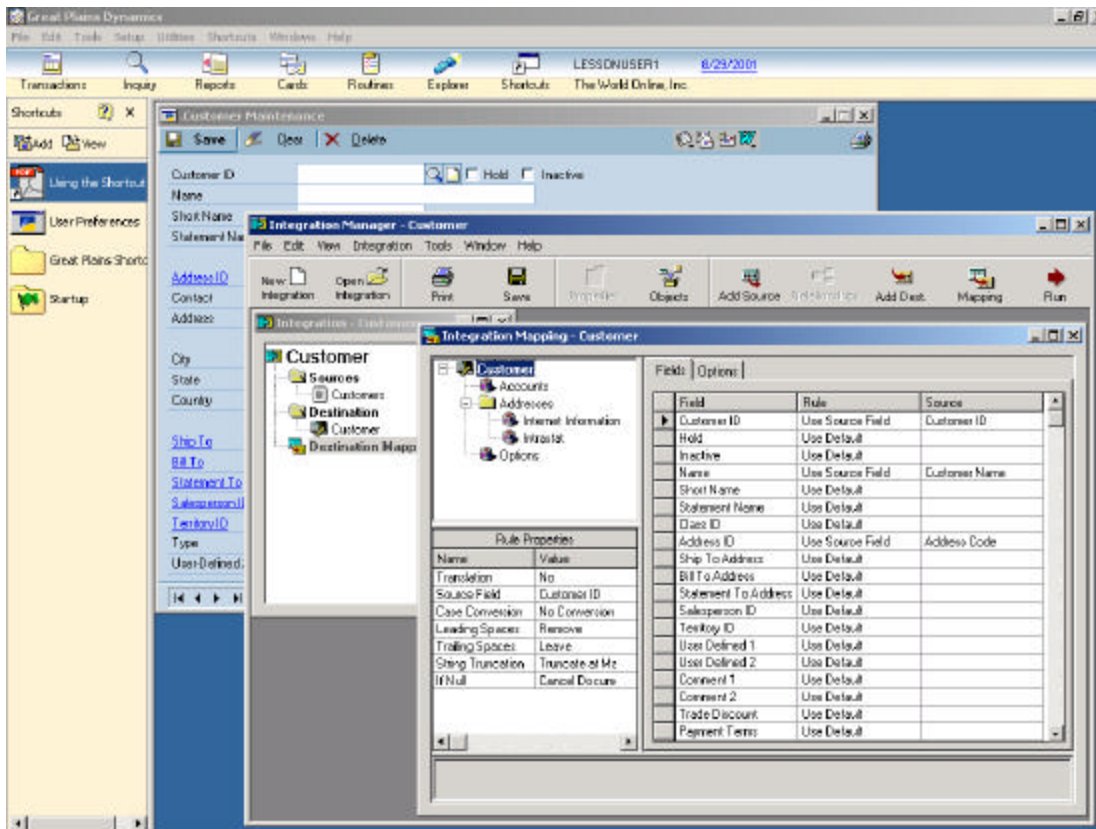
With the Integration Manager, you can purchase the Adapters that best suite the requirements of your integration. Whether you need to integrate from Siebel to Dynamics, Dynamics to XML, or XML to eEnterprise, the Integration Manager is flexible enough to integrate “from anything to anything”.

Dynamics/eEnterprise Destination Adapter - easily integrate into most of the Dynamics and eEnterprise destinations with this Adapter.



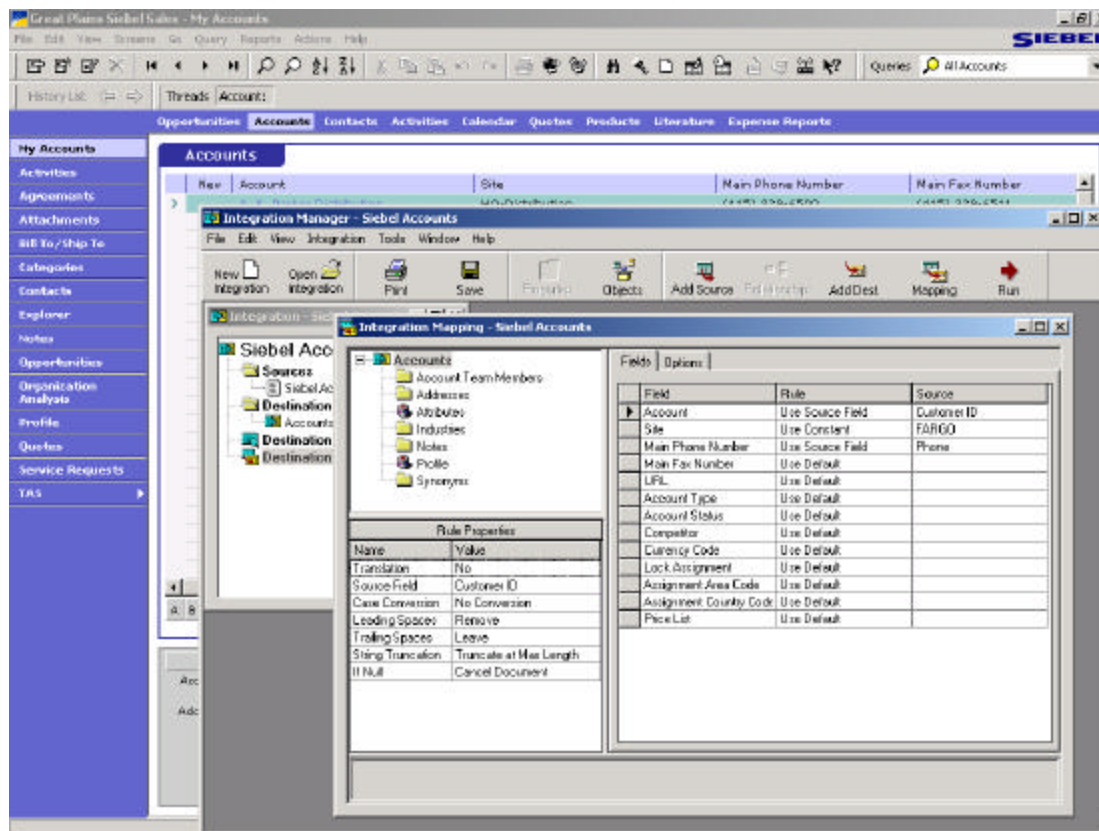
SQL Optimized Destination Adapter - available for SQL only, integrations run 10x to 20x faster than with the Dynamics/eEnterprise Destination Adapter.

Integration Manager



Siebel Source and Destination Adapters - integrate into and out of many areas within Siebel using these Adapters.

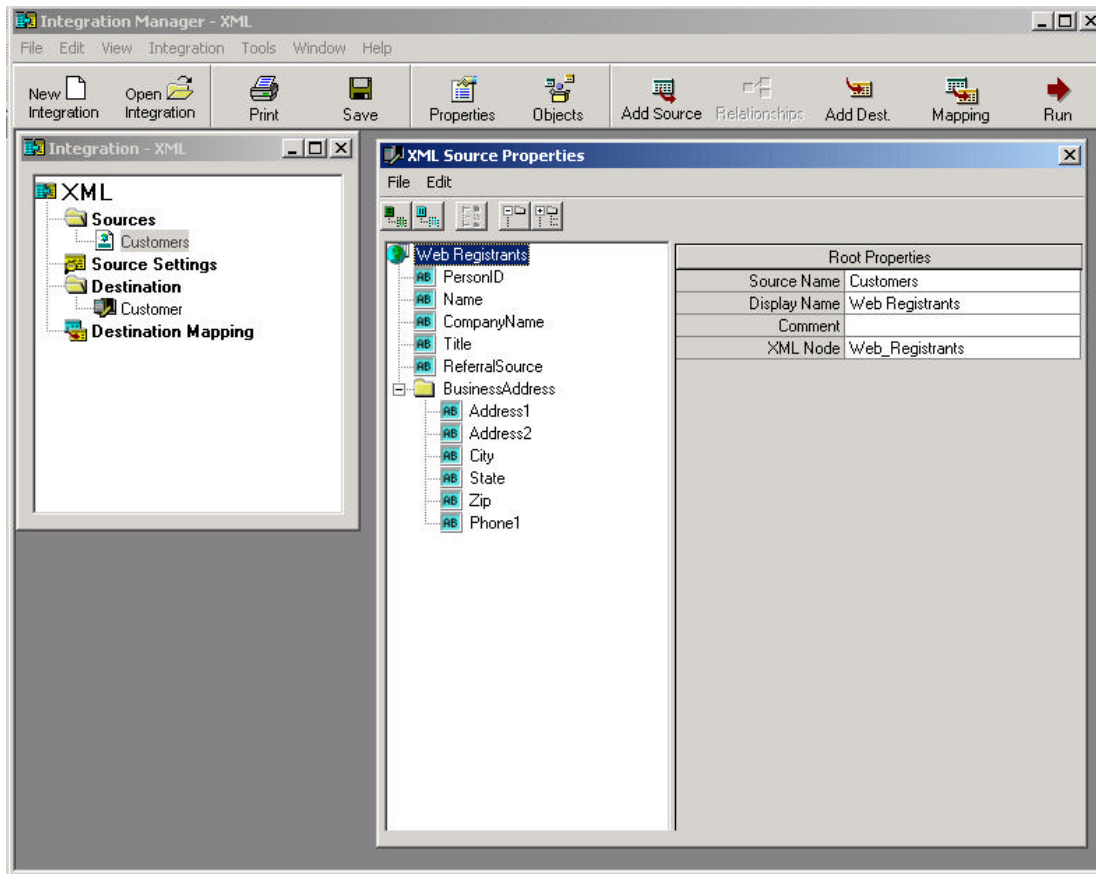
Integration Manager



Direct to Table Destination Adapter - integrate unvalidated data into any module, or create custom destinations that export data to an ODBC data source or delimited text file.

XML Source Destination Adapters - with these Adapters, you can integrate to or from any XML file. Also, you can easily transform one XML file into another XML file – enabling XML transformation.

Integration Manager



© 2001 Microsoft Corp. All rights reserved. All company and product names included in this document may be trademarks or registered trademarks of their respective companies.

